

PROPRIETARY INFORMATION

THIS DRAWING IS THE CONFIDENTIAL PROPERTY OF ENDURA-VEYOR, INC. AND TRANSMITTED IN CONFIDENCE. THE REPRODUCTION, USE OR DISCLOSURE, IN WHOLE OR IN PART, OF THE DESIGN OR DETAILS CONTAINED HEREIN IS PROHIBITED WITHOUT THE EXPRESS WRITTEN PERMISSION OF ENDURA-VEYOR, INC.

CONVEYOR SPECIFICATIONS:

FRAME = STAINLESS STEEL 304

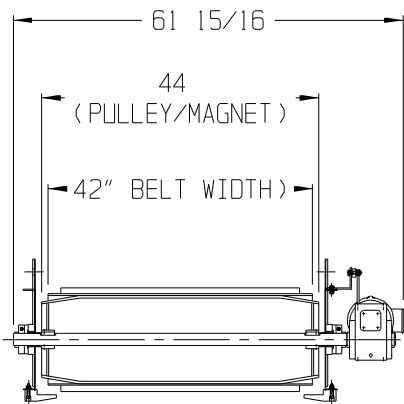
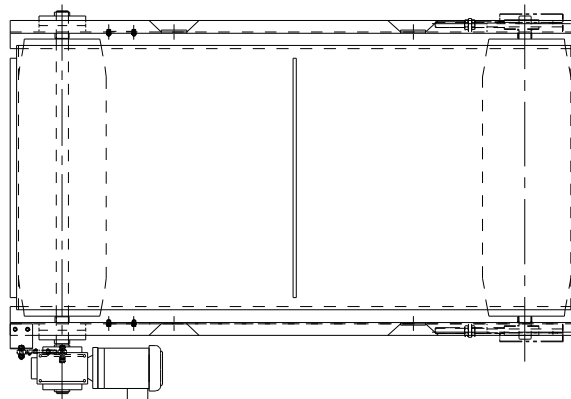
MAGNETS = CERAMIC #8

MOTOR = 3 HP-3PH-460V-TEFC

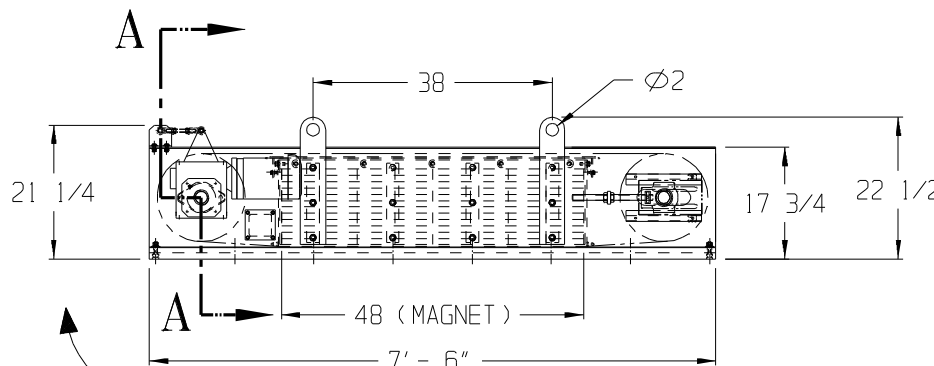
BELT SPEED = 440 FEET/MIN.

BELT TYPE = 2 PLY 220 1/8 X BB MOR

WITH (1" TALL MOLDED CLEATS)
ON 12" CENTERS

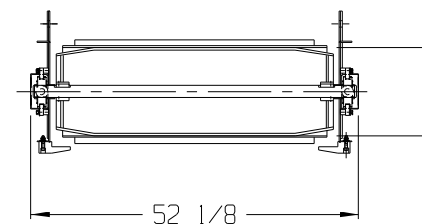


SECTION A-A



BELT DIRECTION

14" DIA.
TRAPEZODIAL
CROWNED PULLEYS
SBR (STD. LAGGING)
TYPE #2 HUBS



PAINT COLOR:
RAL 6024 TRAFFIC GREEN
(GUARDING RAL 1018 ZINC YELLOW)

SAFETY REVIEW

THE NEED FOR SAFETY DEVICES VARIES WITH EACH APPLICATION OF THIS PRODUCT. THIS DRAWING MAY NOT INCLUDE ALL APPROPRIATE SAFETY DEVICES FOR YOUR APPLICATION. AS SYSTEMS INTEGRATOR, PLEASE ADVISE YOUR CUSTOMER OF DEVICES THAT ARE APPROPRIATE FOR HIS/HER APPLICATION, BASED ON YOUR SAFETY ASSESSMENT. DEVICES MAY INCLUDE, BUT ARE NOT LIMITED TO THOSE SUCH AS, ADDITIONAL GUARDING, SAFETY CONTROLS, BARRICADES, END STOPS, ETC. COMPLIANCE WITH FEDERAL, STATE, OSHA AND LOCAL LAWS OR CODES ARE THE RESPONSIBILITY OF BOTH YOU, AS THE SYSTEMS INTEGRATOR/DISTRIBUTOR, AND THE END USER.

APPLICATION REVIEW

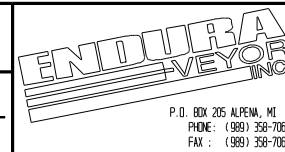
PLEASE REVIEW THE CONVEYOR DESIGN FOR ITS ABILITY TO FUNCTION PROPERLY IN YOUR INTENDED APPLICATION. SYSTEM INTEGRATION AND APPLICATION REVIEW ARE NOT THE RESPONSIBILITY OF ENDURA-VEYOR INC. THEREFORE, ENDURA-VEYOR INC. MAKES NO CLAIM AS TO THE PERFORMANCE OF THIS DESIGN FOR ANY PARTICULAR PURPOSE OR APPLICATION.

APPROVED AS SHOWN OR CHANGES REQUIRED

CO. NAME _____

SIGNATURE _____

DATE _____



P.O. BOX 205 ALPENA, MI 49707
PHONE: (989) 358-7060
FAX: (989) 358-7055

JOB NO: -

DRAWN BY: GRIF

DATE: -

REVISION: -

SCALE: - REF JOB#: -

TITLE: OVERHEAD MAGNETIC CONVEYOR

ORG. NO.:

APPROVAL