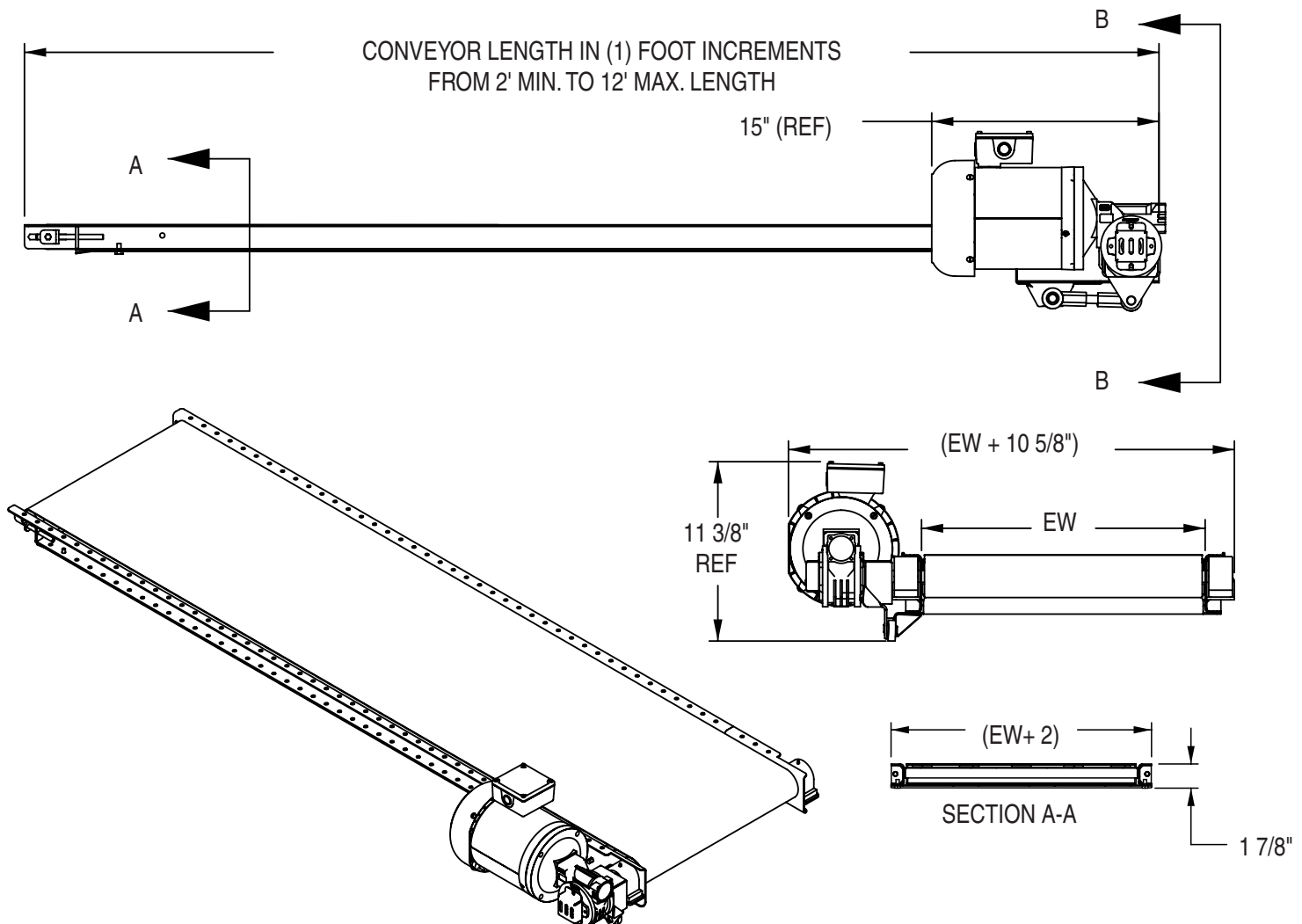


BCLP - CONVEYOR MODEL 213

SPECIFICATIONS

Belt:	<i>Clear Urethane</i>
Belt Widths:	<i>3" - 25" in one inch increments</i>
Frame:	<i>12 ga formed steel, welded in beds</i>
Belt Speeds:	<i>1/4 HP at 20, 25, 30, 40, 55, 80 & 115 FPM (shaft mounted drive)</i>
Optional Features:	<i>Stainless Steel Construction</i> <i>Side Skirts</i> <i>Start/Stop Control -Wired or Shipped Loose</i> <i>Variable Speed Controller</i> <i>Top Mount & Underhung base Mount Drives</i> <i>Leg Supports</i> <i>Casters</i>



ENDURA
-VEYOR
INC.

P.O. Box 205 • Alpena, MI 49707 • fax (989) 358-7065 • voice (800) 356-1593

Visit us on the world wide web: www.endura-veyor.com

* Quantity available for shipment is contingent upon quantity in stock at time of sale.

111354-0304