

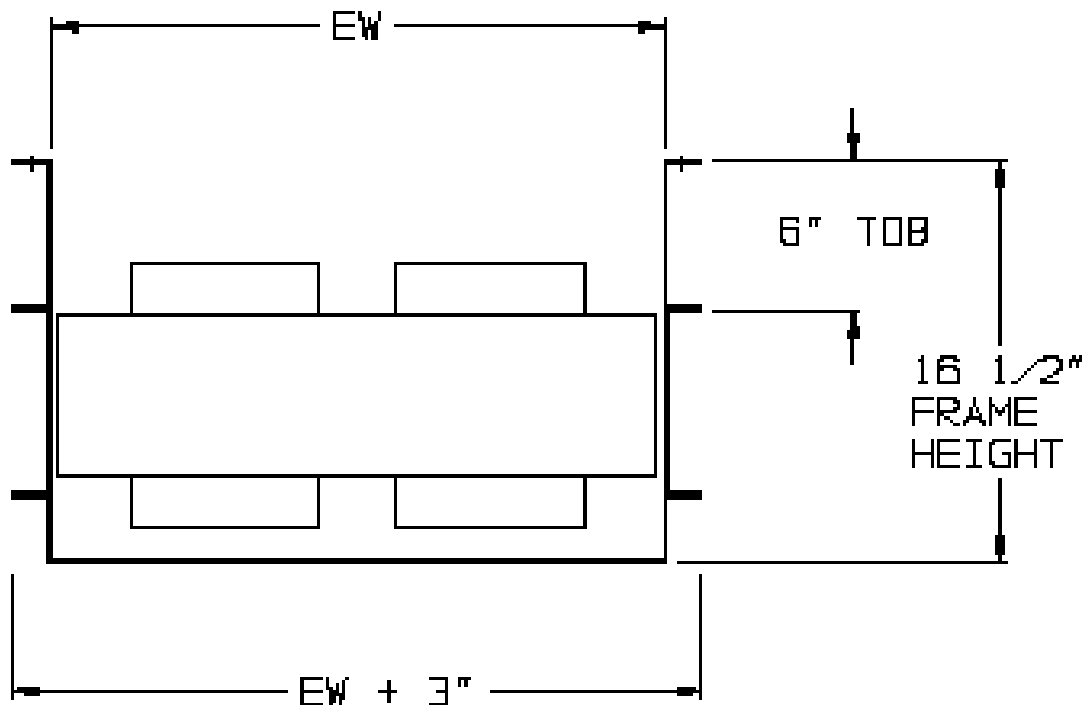
Noseover Belt Conveyor Model 600

SPECIFICATIONS

Effective Widths:	12"- 48" in 1" increments
Live Loads:	Up to 1000 lbs. maximum (40 lbs. per foot of length maximum)
Frame:	Formed 10 ga.
Lengths:	2'-6" - 15'-6" for inclines 2'-6" - 10'-6" for upper horizontals
Belt Speed:	30, 40, 50, 60, 75, 100, 120, 150 and 200 FPM
Belt Types:	PVC with segmented cleats and RMV
Standard:	Effective Widths: 36" and 48" Standard Speeds: 40 and 60 FPM

Choosing stock widths enables one day ship on most replacement parts as well

Typical Cross Section For Segmented Cleats



*This drawing is for dimensional reference only.
It may not accurately depict the final conveyor design.*



P.O. Box 205 • Alpena, MI 49707 • fax (989) 358-7065 • voice (800) 356-1593

Visit us on the world wide web: www.endura-veyor.com