

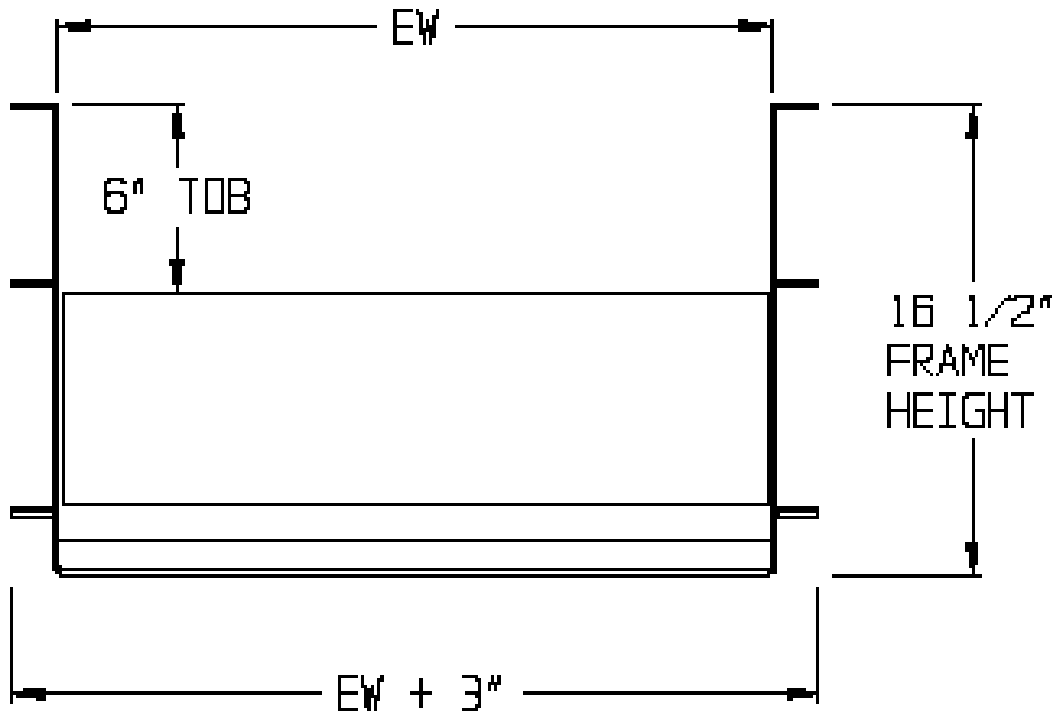
# Slider Bed Belt Conveyor Model 660

## SPECIFICATIONS

<b>Effective Widths:</b>	12"- 48" in 1" increments
<b>Live Loads:</b>	Up to 2000 lbs. (40 lbs./ft. of length maximum)
<b>Frame:</b>	Formed 10 ga.
<b>Lengths:</b>	5 ft. to 60 ft. in 1 ft. increments
<b>Belt Speed:</b>	30, 40, 50, 60, 75, 100, 120, 150 and 200 FPM Other speeds available on request
<b>Horsepower:</b>	1/2, 3/4, 1, 1-1/2, 2, 3 and 5 H.P.
<b>Belt Types:</b>	PVC, RMV and Urethane
<b>Standard:</b>	Effective Widths: 36" and 48" Standard Speeds: 40 and 60 FPM

Choosing stock widths enables one day ship on most replacement parts as well

## Typical Cross Section



*This drawing is for dimensional reference only.  
It may not accurately depict the final conveyor design.*

