



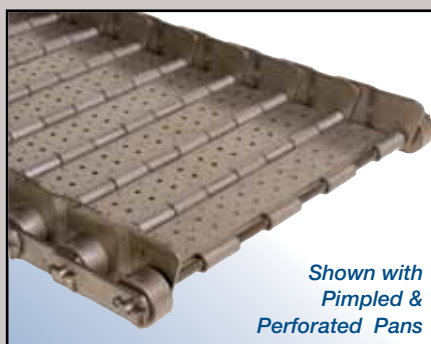
Hinged Steel Belting Solutions

Endura-Veyor, Inc. offers the most hinged steel belt solutions available on the market today. We have taken our experience and created cost effective options that will help you tackle the challenges you face in your industry. Our belts interchange with all major 2-1/2" pitch manufacturers when used as replacement belting.



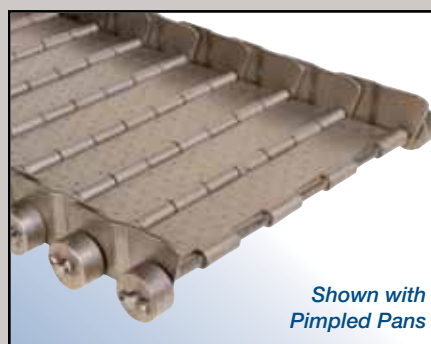
Shown with Plain Pans

Welded Wing Belting
with inside and outside sidebars



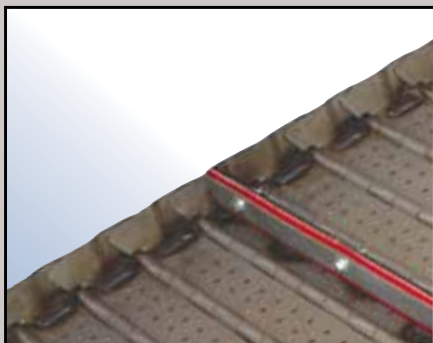
Shown with Pimpled & Perforated Pans

Slide On Wing Belting
with outside sidebar



Shown with Pimpled Pans

Slide On Wing Belting
without outside sidebar



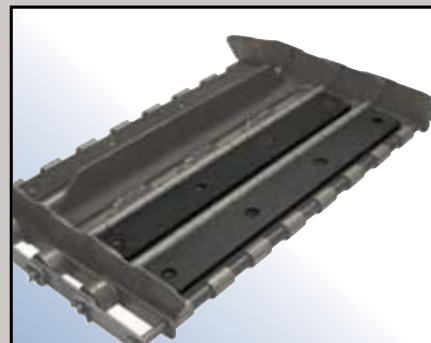
Wiper Cleats

- Helps keep frame clear of tramp material
- Easily replaced if necessary



Impact Pads

- Impact pads are used with an impact rail to help prevent belt deflection
- Welded hinge loops and welded axles also available



Top Plates

- Helps protect belt hinges
- Helps increase heat resistance



Sprockets — Standard & Custom

- Our standard sprockets are kept in stock
- Custom sprockets per your specification

Fax: 989-358-7065
Phone: 800-356-1593
www.endura-veyor.com



Hinged Steel Belting Solutions

In the metal working industry there are applications, and environments, that require creative belting solutions.

For this reason, Endura-Veyor, Inc. has developed the widest range of 2 1/2" pitch hinged belting to help solve unique material handling challenges. Please review the options we have developed and then consult one of our customer service professionals.



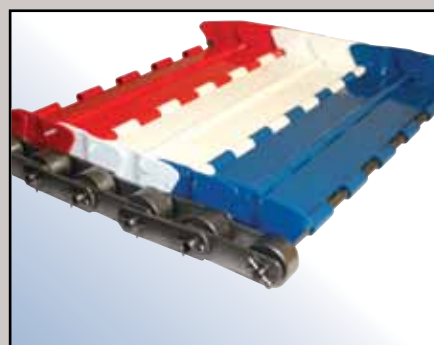
Stainless Steel

- Corrosion resistant
- Less magnetic than standard steel belt



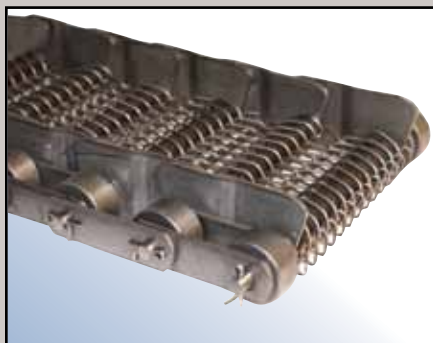
Plastic Pan

- Gentler on finished parts
- Corrosion resistant



Powder Coated

- Special colors for brand recognition
- Visually appealing



Wire Mesh

- High heat up to 1500°F
- Drain liquids



Zinc Coated

- Corrosion resistant
- More economical than stainless steel



Low Profile

- For low profile conveyor
- Built to last