

# Low Profile Slider Bed Conveyor

- Designed to convey light weight bulk parts and stampings.
- Ideal for stamping press operations and plastic injection molding applications.
- Most units ship assembled and ready to install.
- Assembled and Tested



**For additional information, visit our website:  
[www.endura-veyor.com](http://www.endura-veyor.com)**

# Low Profile Slider Bed Conveyor

## STANDARD SPECIFICATIONS

**Frame Construction:** 12 ga. formed steel, bolt in beds

**Belt Widths:** 3" - 25" in two inch increments (effective widths are "BF" - 1" when overhung side skirts are added)

**Lengths Available:** 2' to 12' in one foot increments (minimum length is 3 times width)

**Belting Type:** Standard Rav 100 lite

**Belt Speeds:** 1/4 HP at 20, 40, 50, 70, 103 FPM (shaft mounted drive)

**Load Capacity:** 10 lbs. per ft., up to 100 lb. max., not rated for impacts

## OPTIONAL FEATURES

Stainless steel construction

Side skirts (see options below)

Start/Stop controls

Variable speed controller

Wired power cords

PVC side guides (see below)

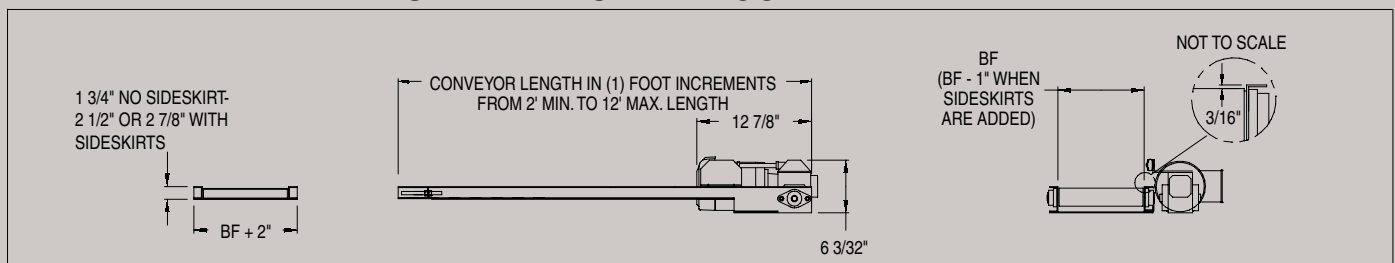
Urethane, Neoprene and static conductive belting

Top mount and bottom mount drives

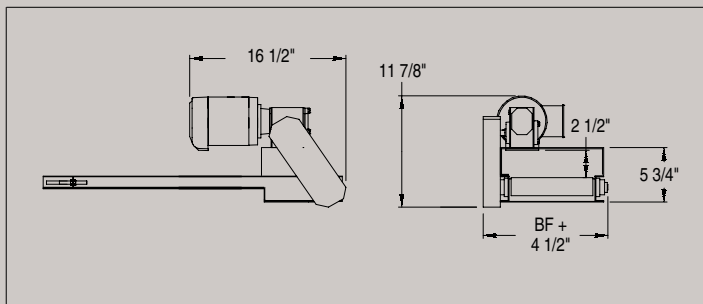
Leg supports

Casters

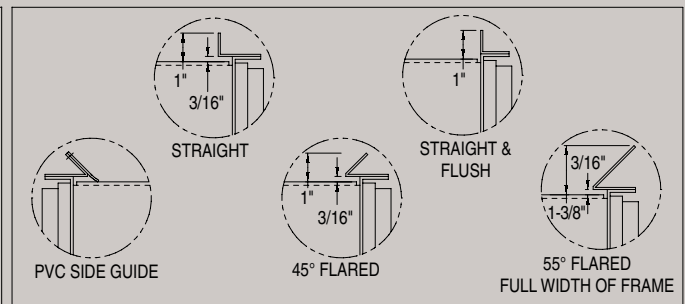
## STANDARD SHAFT MOUNT DRIVE



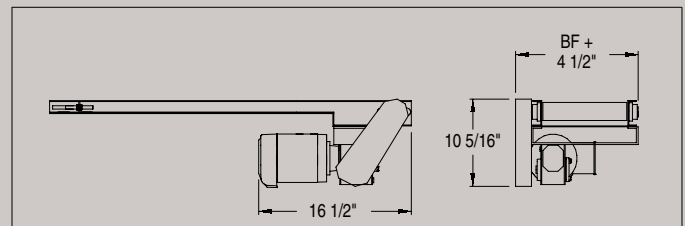
## OPTIONAL TOP MOUNTED DRIVE



## OPTIONAL SIDE SKIRTS



## OPTIONAL BOTTOM MOUNTED DRIVE



**ENDURA**  
-VEYOR  
INC.

P.O. Box 205  
Alpena, Michigan 49707  
Fax: 989-358-7065  
Phone: 800-356-1593  
[www.endura-veyor.com](http://www.endura-veyor.com)